



MONTHLY MEMBERSHIP PROGRESS REPORT

District 2 T2

Results as of: 12/31/2016

GMT: HAL GRIFFIN

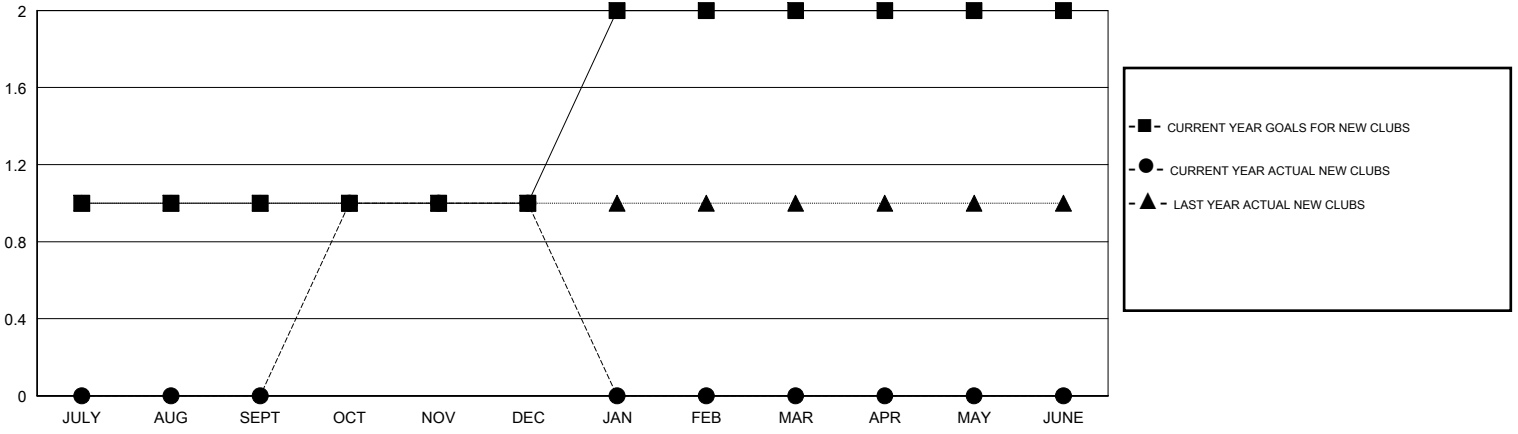
LOCATION TEXAS

GMT CA 1

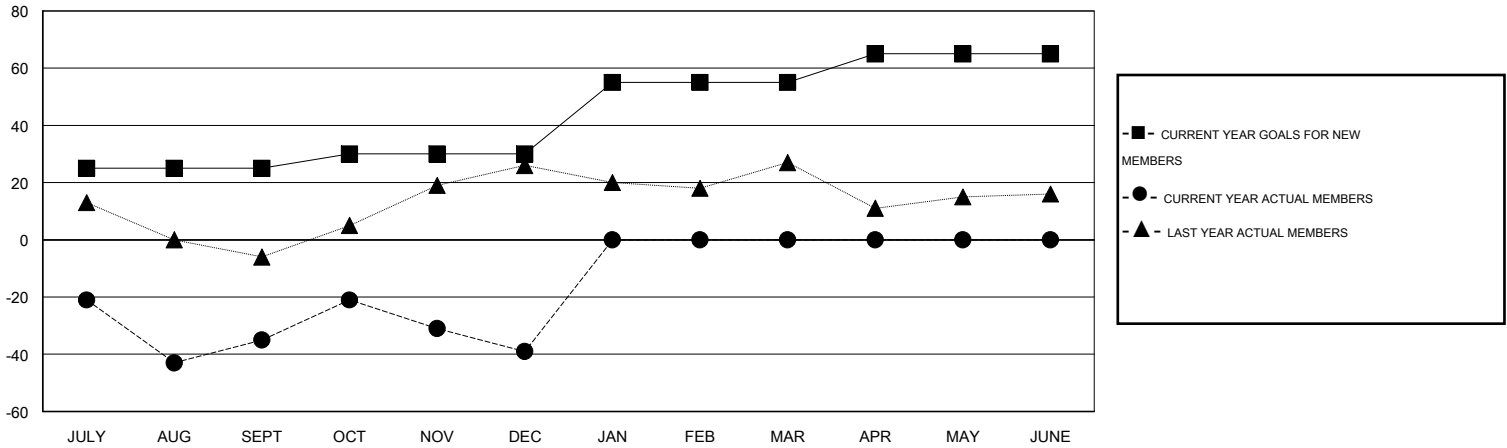
Clubs				
RESULTS FOR 2016-2017				
QUARTER	NEW CLUB GOAL	NEW CLUBS	DROPPED CLUBS	NET GAIN/LOSS
JULY/AUG/SEPT	1	0	0	0
OCT/NOV/DEC	0	1	1	0
JAN/FEB/MAR	1	0	0	0
APR/MAY/JUNE	0	0	0	0

Members				
RESULTS FOR 2016-2017				
QUARTER	NEW MEMBER GOAL	CHARTER AND NEW MEMBERS ADDED	DROPPED MEMBERS	NET GAIN/LOSS
JULY/AUG/SEPT	25	33	68	-35
OCT/NOV/DEC	5	47	51	-4
JAN/FEB/MAR	25	0	0	0
APR/MAY/JUNE	10	0	0	0

GOALS AND ACTUAL NEW CLUBS CUMULATIVE



GOALS AND ACTUAL MEMBERS CUMULATIVE



DROPPED CLUBS: 1

16 CLUBS OF 43 ADDED 1 OR MORE NEW MEMBERS

GENDER DISTRIBUTION	
MALE	989 (76.14%)
FEMALE	310 (23.86%)

DROPPED MEMBERS	
DECEASED	2
CLUB CANCELLED	13
OTHER	104
TOTAL	119

[CLICK HERE FOR HEALTH ASSESSMENT DATA](#)

FAMILY UNIT MEMBERS	118
HEAD OF HOUSEHOLD	58
NON-HEAD OF HOUSEHOLD	60